

# Aficio™ 1022/1027

## Specifications

### Copier

Configuration:	Desktop
Copying Process:	Twin laser beam scanning & electro-photographic printing
Continuous Copy Speed:	22 cpm/27 cpm
Multiple Copy:	Up to 99
Warm-up Time:	10 seconds
First Copy Speed:	4.9 seconds
Resolution:	600 dpi
Memory Capacity:	
Standard:	32 MB
Option:	32 MB/64 MB
Input Capacity:	
Standard:	500-sheet tray x 2
Option:	500-sheet tray x 2 or 2,000 sheets LCT 100-sheet multi-bypass tray
Output Capacity:	
Standard:	500 sheets (internal tray) 250 sheets (with bridge unit)
Option:	125-sheet 1 Bin Tray 500-sheet Finisher 1,000-sheet Finisher
Paper Size and Weight:	A6 - A3 (52 - 157 g/m <sup>2</sup> )
Magnification Ratios:	7 reductions and 5 enlargements
Zoom:	25% to 400% in 1% steps
Interrupt Copy:	Standard
User Code:	Standard 100 codes (Optional max. 500)
Dimensions (W x D x H):	550 x 604 x 980 mm
Rating Power Specification:	220 - 240 V, 50/60 Hz
Power Consumption:	Max.: 1.44 kW (full system)

### Other Options

- 50-sheet ARDF
- Duplex Unit
- Shift Sort Tray
- Interchange Unit
- Network Scanner

### Fax (Option)

Circuit:	PSTN, PBX, ISDN (Option)
Compatibility:	ITU-T (CCITT) G3, additional Super G3 (Option), G4 (Option)
Resolution:	
Standard/Detail:	200 x 100/200 dpi
Option:	400 x 400 dpi
Compression Method:	
Standard:	MH, MR, MMR, JBIG (Option)
Scanning Speed:	Less than 0.8 seconds (200 x 100 dpi, A4)
Modem Speed:	
Standard:	Max. 33.6 Kbps
G4 Option:	64/56 Kbps
Memory Capacity:	
SAF Memory:	
Standard:	2 MB (approx. 160 pages)
Option:	32 MB DIMM (approx. 400 pages)
Memory Backup:	Yes

### Other Features

- Quick Dial:  
Standard: 400 numbers  
Option: 1,200 numbers or 1,000 Quick Dials and 200 Speed Dials
- Group Dial: 64 groups
- Confidential Transmission/Reception

### Printer (Option)

Continuous Print Speed:	22 ppm/27 ppm
Printer Language:	
Standard:	PCL5e, PCL6, RPCS™
Option:	Adobe® PostScript® 3™
Resolution:	
PCL5e:	600 dpi
PCL6/RPCS™/Adobe® PostScript® 3™:	600 dpi
Interface:	
Standard:	IEEE1284
Option:	IEEE1394 (2 ports, 6 pins) Ethernet (100 baseTX/10 base T)

### Memory Capacity:

Standard:	32 MB
Option:	64 MB
Network Protocol:	TCP/IP, IPX/SPX, NetBEUI, AppleTalk (Auto Switching)
Printer Languages/Drivers:	
PCL/RPCS™:	Windows® 95/98/Me/NT4.0/2000
Adobe® PostScript® 3™:	Macintosh 8.6/9.x

### Software (Standard)

- SmartNetMonitor™
- DeskTopBinder™ V2 Lite
- ScanRouter™ V2 Lite



Ricoh has determined that this product meets the ENERGY STAR guidelines for energy efficiency.

Ricoh believes in conserving the earth's precious natural resources. This brochure is printed on environmentally friendly paper: 50% recycled fibres, 50% chlorine free bleached pulp.

All brand and/or product names are trademarks of their respective owners.

Specifications and external appearance are subject to change without notice. The colour of the actual product may vary from the colour shown in this brochure.

**RICOH**  
Image Communication

Home Page: <http://www.ricoh-europe.com>

RICOH EUROPE B.V. Groenelaan 3, P.O. Box 114, 1180 AC Amstelveen, The Netherlands. Phone: +31 (0)20-5474111 Fax: +31 (0)20-6418601

For more information, please contact:

Aficio™ 1022/1027

**Aficio™**



**The Digital Multi-functional Station  
for Small and Medium Workgroups  
and Departments**

**RICOH**  
Image Communication

# Superb Digital Modularity

A multi-functional system that saves time, costs and offers exceptional versatility and digital advantages? The new Aficio™1022/1027 fully answers that description. You will no longer waste valuable time and energy running from your desk to the fax, or via the printer to the copier. This all-in-one upgradeable copy, fax, print and scan solution combines multi-functional benefits while letting your office gain from its superb digital advantages. Apart from boasting excellent reliability and optimised original handling, the Aficio™1022/1027 also operates to an extremely high level of performance. In addition, the Aficio™1022/1027 offers a wide range of document management solutions to streamline the network document flow.



# Unique Multi-functional Efficiency

Offering high speed and optimal control, the Aficio™1022/1027 will bring about an amazing increase in the overall productivity and efficiency of your small and mid-sized workgroup or department. Practical in operation and high on image quality, the Aficio™1022/1027 is the ideal multi-functional system to support you in your daily office work.

## Optimised Modular Productivity

As office demands increase, so does the need for a highly productive multi-functional system. With the new Aficio™1022/1027 wasting valuable time and energy running from one office device to the other is history. This all-in-one system combines copy, fax, print and scan capabilities and allows you to benefit from all these functions in one time and cost-efficient modular unit. QSU technology ensures that any copy/print job is carried out extremely quickly. With a superb continuous copy/print rate of 22/27 ppm, the Aficio™1022/1027 will meet any deadline. Moreover, duplex productivity equals the simplex copy speed guaranteeing swift output. And as this system warms up from "Sleep Mode" in only 10 seconds, waiting time is minimal.

## High Quality Guaranteed

To meet all today's copy/print requirements and produce professional looking documents, the Aficio™1022/1027 boasts an excellent copy/print resolution of 600 dpi. Additionally, scanning at 256 greyscales allows for crystal-clear image processing and makes sure digitising is done in the most professional way.

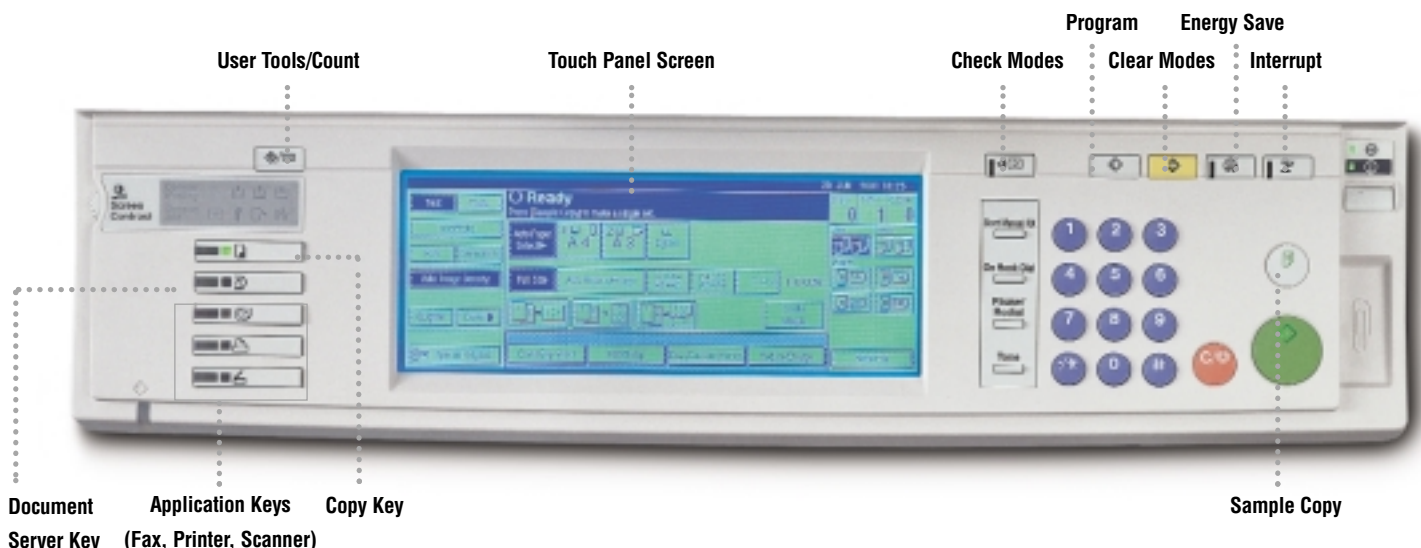
## Practical Operation

Not only does the Aficio™1022/1027 offer advanced functionalities, it is also very easy to operate. Equipped with a user-friendly LCD touch screen, this multi-functional system guides you intuitively through all jobs whether simple or complex. And thanks to the strategically located application keys, switching between the system's different functions takes seconds.

## Optimal Control

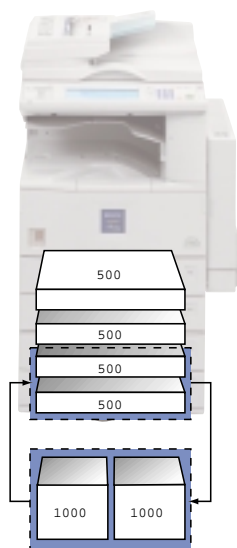
To keep track of the number of copies/faxes/prints each user in your office makes, you can depend on the Aficio™1022/1027's User Code function. By assigning codes to users you can manage the number of copies/faxes/prints they make and the functions they can use. This will in turn allow you to accurately allocate costs and reduce unnecessary expenses.

The Aficio™1022/1027 can be operated by anyone thanks to the system's user-friendly LCD touch screen.



# Superb Versatile Copying

To optimise your office's performance, you need a complete copy solution that combines high productivity, superb quality output and flexible paper handling. With Ricoh's new Aficio™1022/1027 you can enjoy all these benefits.



No need for continuous refilling thanks to the system's two standard 500-sheet paper trays, the optional 2,000-sheet LCT or two 500-sheet paper banks.

## Image Rotation

With the Aficio™1022/1027, superb quality copy output is guaranteed at all times. Originals are scanned only once and stored into memory from where they can be reproduced as often as needed. Thanks to this "Scan Once, Copy Many" principle, the highest copy quality is maintained, no matter how many sets you make. Independent of how you position originals in the Document Feeder, thanks to Image Rotation the Aficio™1022/1027 will make perfect copies every time. If the available paper supply does not match the original, the Aficio™1022/1027 will rotate the image so that it does. As a result you do not have to worry about the position of your original and you avoid misfeeds at the same time.

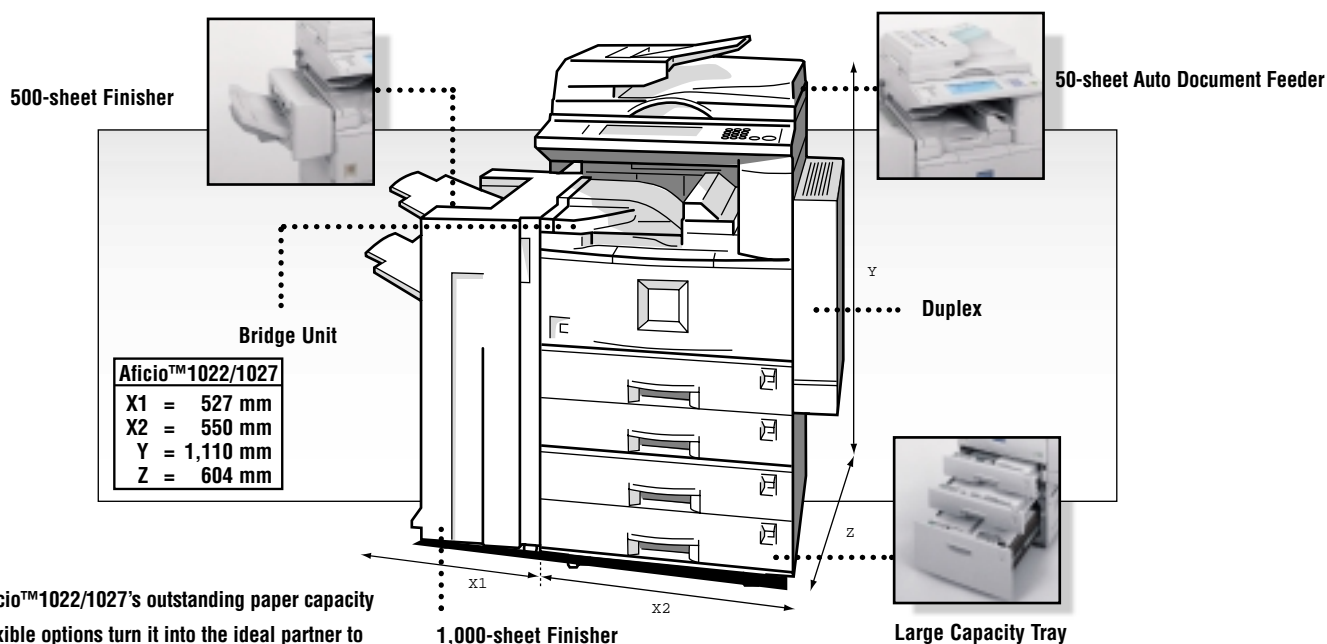
## Flexible Paper Handling

Large copy jobs usually require extra attention as the machine can run out of paper and need a refill. Not so with the Aficio™1022/1027. With an outstanding maximum paper capacity of 3,100 sheets, you can simply remain at your desk and take care of other pressing matters while you let the Aficio™1022/1027 do its job. In your office you undoubtedly handle

a variety of originals such as non-standard documents or magazines. Whether copying, printing or faxing, paper type and thickness are no problem for the Aficio™1022/1027 as it supports paper types ranging from A6 to A3. Paper thickness of up to 157 g/m<sup>2</sup> can be handled from the second paper tray. If you want to print on special paper like company letter heads, cards or non-carbon required paper, you can use the Tray Lock function. You do not have to worry that the wrong paper is used as the printer will stop as soon as the special paper tray is empty.

## Efficient Finishing

For professional finishing this system is equipped with two optional Finishers - for 500 or 1,000 sheets -, both featuring convenient stapling functions. The Aficio™1022/1027 also makes sure slow manual sorting and the need for a separate sorter belong to the past. The Electronic Sorting function facilitates easy handling and makes sure you receive your copies and prints in easy-to-remove batches. Ideal for quick distribution, this function makes the whole process of document management really efficient.



The Aficio™1022/1027's outstanding paper capacity and flexible options turn it into the ideal partner to take care of all your document management needs.

# Professional Fax Traffic

In your competitive business environment, fax traffic needs to run smoothly. By upgrading the Aficio™1022/1027 to a high-performance central fax, your office will undoubtedly gain from its outstanding capabilities. These include high speed, convenient Quick Dial numbers and a professional network PC-fax option. Moreover, you can even send and receive faxes at the same time.

## Speedy Transmission

With an impressive G3 modem speed of 33.6 Kbps and ultra-fast transmission speed of 3 seconds, the Aficio™1022/1027 swiftly deals with all your office's heavy fax traffic. Scanning is done in a mere 0.8 seconds and you can effortlessly scan multi-page documents into the fax memory thanks to the system's 50-sheet Document Feeder. Additionally, the system's multi-port facility allows you to send and receive faxes at the same time. Upgradeable to up to three lines (2x G3 and 1x ISDN/G4) that can be used simultaneously, this is ideal for heavy fax users. You can boost the speed and accuracy of the Aficio™1022/1027 fax module by upgrading it with a G4 modem. Data is transferred at a super fast 64 Kbps, which will drastically reduce transmission costs.

## Higher Efficiency and Quality Faxing

Faxing does not necessarily include walking up to the machine to send faxes thanks to the Aficio™1022/1027's PC-fax software. You can now transmit faxes directly from your own computer or any other PC in the network.

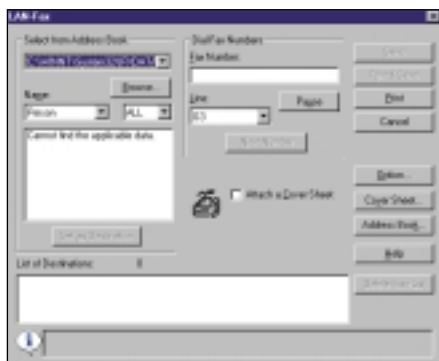
This not only saves you time and paper, it also ensures better output quality at the receiving end as the original document on PC is immediately sent by fax. To further optimise time saving, you can also simultaneously send faxes with LAN FAX and receive incoming faxes thanks to ScanRouter™ Professional.

## Extra Fax Convenience

To further optimise your fax traffic and make the whole process more time-efficient, selecting recipients is carried out in seconds with the Aficio™1022/1027's 400 standard Quick Dial numbers. Moreover, there is no need to copy books or non-standard originals such as magazines before faxing them as they can be scanned directly from the platen glass. And thanks to the optional Document Feeder you are able to send up to 50 pages at a time, including double-sided originals. In addition, you can save on paper costs by receiving double-sided faxes with the Aficio™1022/1027's optional Duplex unit.



Scanning multi-page documents into the fax memory is very easy thanks to the system's 50-sheet ARDF.



The Aficio™1022/1027's modem speed of 33.6 Kbps and the possibility to send faxes through LAN FAX guarantee ultra-fast faxing.



Transmitting faxes directly from your own PC saves you paper and time and even ensures better output quality at the receiving end.

# Accurate Network Printing and Scanning

To cope with your business's growing print and scan needs, the Aficio™1022/1027 is effortlessly turned into a productive full-function office network printer and scanner. Simply add the optional printer or printer/scanner option to increase your office's productivity and provide all the work efficiency you need.

## Highly Productive Digitising

The Aficio™1022/1027 makes scanning a very straightforward and user-friendly process. With the greatest of ease you can scan originals such as books and magazines straight from the platen glass. For large jobs and documents up to A3, the Aficio™1022/1027 boasts an optional fast-feeding ARDF, capable of scanning multi-page documents to any PC in the network.

## Professional Document Handling

With the Aficio™1022/1027 documents can be created professionally thanks to a variety of document handling features such as duplex printing, sorting, stapling and collation. For multiple sets, you can use Sample Print™, which means you have the possibility to print only the first set, verify print results and make any necessary changes before outputting the remaining sets. In addition, the Locked Print™ function enables you to print jobs confidentially when desired. Classified or personal print jobs will only be released after you confirm your user ID and password at the printer control panel.

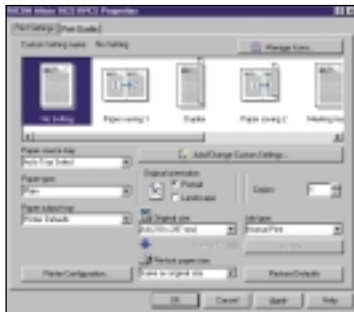
And for easy and practical output sorting the Aficio™1022/1027 is equipped with the handy Slip Sheet function.

## Simplified Print Setting

With the Aficio™1022/1027's standard printer languages PCL5e/PCL6 and optional Adobe® PostScript® 3™, printing is completed in the most time-saving and cost-effective way. Yet, fitted with Ricoh's new standard RPCS™ driver, this system boasts a fast-processing and easy-to-use Driver User Interface that allows you to save your own print settings under a special icon. The next time you print via RPCS™, a simple One Click will handle your print job exactly the way you want it. The result? Less misprints saving you paper and costs.

## Time- and Cost-saving Printer Control

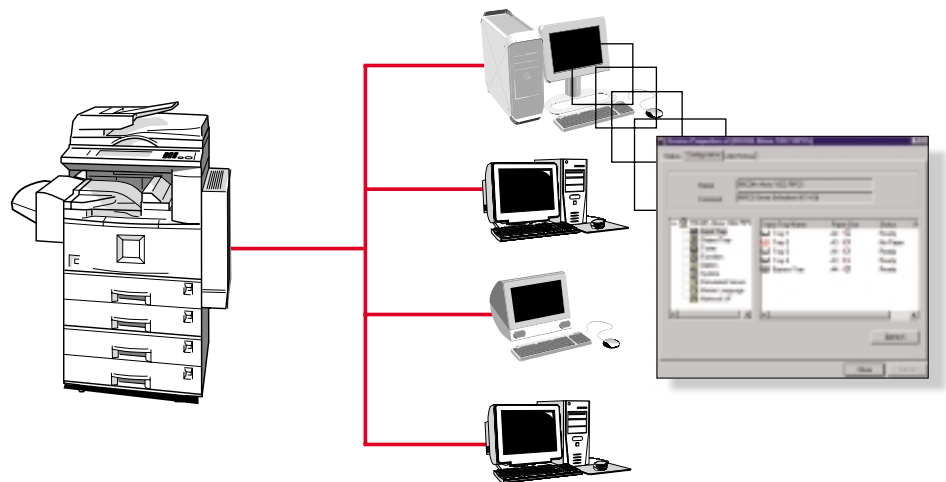
Equipped with Ricoh's state-of-the-art SmartNetMonitor™ software, the Aficio™1022/1027 becomes a complete print monitoring solution. SmartNetMonitor™ lets you customise the display of status information, set user privileges and obtain job statistics of the number of pages printed. And while helping you keep count of all print jobs, this software allows for stringent cost control at the same time.



For extra user-friendliness you can save your own print setting under a special icon.



Scanning on the Aficio™1022/1027 is a straightforward and simple process.



Equipped with SmartNetMonitor™ software, the Aficio™1022/1027 becomes a complete network monitoring solution.

# Taking Charge of Document Management

Managing the information that comes to you daily from various sources is not an easy task.

With Ricoh's optional Document Server and new software installed, the Aficio™1022/1027 becomes a central document manager, set to streamline your entire document flow. It allows you to store, manage and distribute all your workgroup's copy/fax/print and scan data in the most efficient way.

## Document Server

The ever-increasing piles of paper in your office can easily be tackled. With the Aficio™1022/1027's optional Document Server, documents are digitised in a flash. Documents originating from copy, print, fax, PC-fax and scanner data can be stored on the system's optional Document Server, which serves as a central document storage centre.

## Versatile Management Options

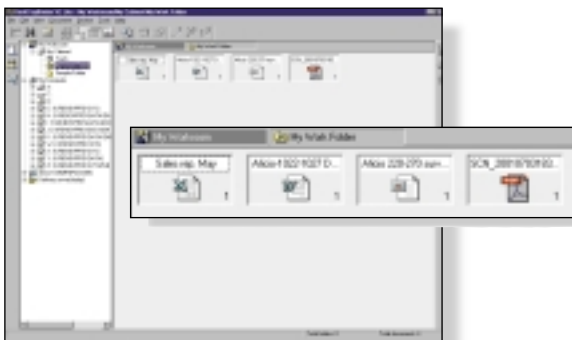
Via the Aficio™1022/1027's bundled software package you have the ability to view and manage all the stored information on the Document Server. DeskTopBinder™ V2 Lite provides easy access to the saved data and allows for efficient document management from the network as well as from the convenience of your own desk. You can search for documents by user name, file name or time created; view them from PC, delete them or change their characteristics.

## Ultra-efficient Distribution

To fully optimise your office's efficiency, the Aficio™1022/1027 offers various professional distribution possibilities. Users connected to the network can re-print, re-fax or digitally re-distribute any of the data stored on the Aficio™1022/1027's Document Server. Documents and print jobs stored here, including all job settings, can be retrieved at any time for on-demand printing. A simple operation that will give you enhanced productivity.

## Easy Merging

You often need information from various electronic sources such as text files, spreadsheets and slides. Integrating this material into one presentation is usually time-consuming. Thanks to the Aficio™1022/1027's Job Binding function you can now merge files created in several electronic formats (e.g. Word, Excel, PowerPoint® etc.).



DeskTopBinder™ V2 Lite allows for efficient document management from the network or your own desk.



Information from text files, spreadsheets or slides can be easily merged with the Aficio™1022/1027's Job Binding function.



The Aficio™1022/1027 makes sure that creating a professional presentation is no longer time-consuming.